

DATE PLOTTED: 7 August 2012 3:34 PM BY: DASHPREET SINGH (SYDNEY)

XREF: X-GRP-A1-SHT: X-SYD-A1-Logo  
CAD FILE: \\Urban\6000 - 6099\600201 - Kurnell Peninsula\3 Drafting\Drawings\DA3\600201-3001\51.dwg



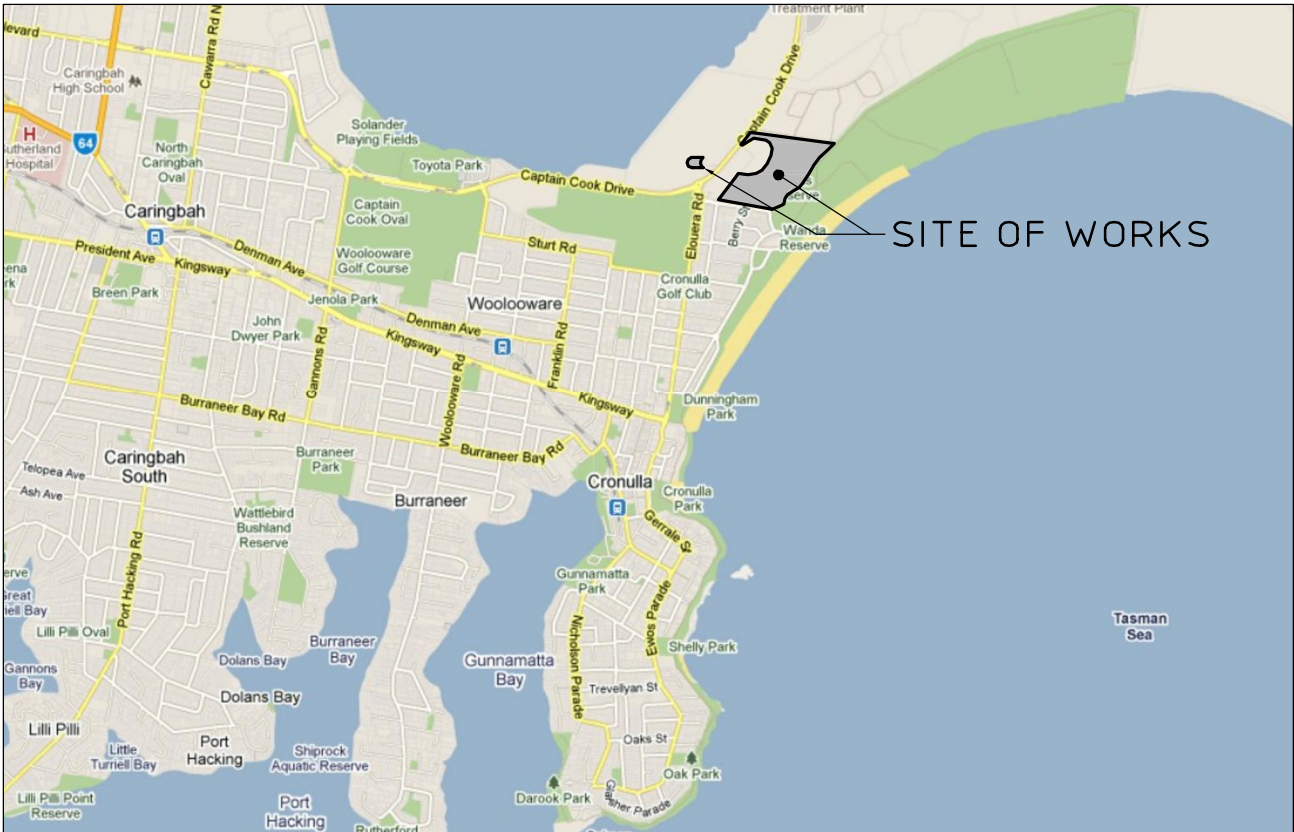
# SHEARWATER LANDING - PROPOSED SUBDIVISION

## DA SUBMISSION

### BATE BAY ROAD, GREENHILLS BEACH

DRAWING SCHEDULE

600201-3001	COVER SHEET, LOCALITY SKETCH AND DRAWING SCHEDULE
600201-3002	EXTENT OF DEVELOPMENT
600201-3003	DEVELOPMENT PLAN
600201-3005	OVERALL SITE PLAN AND EXISTING UTILITIES PLAN
600201-3006	MASTERPLAN
600201-3007	OVERALL CONCEPT LAYOUT
600201-3008	STAGE 1 WORKS
600201-3009	SUBDIVISION PLAN - STAGE 1A TO STAGE 2B
600201-3010	SUBDIVISION PLAN - STAGE 2C
600201-3011	STAGE 1 TO STAGE 2B GENERAL ARRANGEMENT PLAN SHEET 1 OF 3
600201-3012	STAGE 1 TO STAGE 2B GENERAL ARRANGEMENT PLAN SHEET 2 OF 3
600201-3013	STAGE 1 TO STAGE 2B GENERAL ARRANGEMENT PLAN SHEET 3 OF 3
600201-3014	STAGE 2C GENERAL ARRANGEMENT PLAN SHEET 1 OF 1
600201-3015	TYPICAL CROSS SECTIONS - SHEET 1 of 2
600201-3016	TYPICAL CROSS SECTIONS - SHEET 2 of 2
600201-3017	DETAILS SHEET
600201-3020	LONGITUDINAL SECTIONS - ROAD 1 SHEET 1 OF 2
600201-3021	LONGITUDINAL SECTIONS - ROAD 1 SHEET 2 OF 2
600201-3022	LONGITUDINAL SECTIONS - ROAD 2
600201-3023	LONGITUDINAL SECTIONS - ROADS 3, 4 & 5
600201-3030	OVERALL CONCEPT STORMWATER CATCHMENT PLAN
600201-3035	WETLAND BASIN DETAIL
600201-3037	TYPICAL SECTIONS - WETLAND BASIN
600201-3040	CONCEPT WATER & SEWER DESIGN
600201-3050	CONCEPT EROSION & SEDIMENT CONTROL PLAN
600201-3055	CONCEPT ELECTRICAL RETICULATION DESIGN
600201-3060	CUT/FILL PLAN
600201-3065	SITE SECTIONS - 1 of 3
600201-3066	SITE SECTIONS - 2 of 3
600201-3067	SITE SECTIONS - 3 of 3
600201-3070	DETAILS OF MAINTENANCE BAYS FOR GPT



MAP REPRODUCED WITH THE PERMISSION OF URB.  
COPYRIGHT UNIVERSAL PUBLISHERS PTY LTD 06/11/05

LOCALITY SKETCH  
NTS

NOT CONSTRUCTION ISSUE

Rev	Date	Description	Drawn	Appr
5	2/08/2012	FOR APPROVAL	DH	GN
4	21/06/2012	WETLAND BASIN INCLUDED IN SITE	DH	GN
3	28/05/2012	FOR APPROVAL	DH	GN
2	12/04/2012	PRE DA ISSUE	DH	GN
1	28/02/2012	CLIENT REVIEW	DH	DNA



© Cardno Ltd 2011  
All Rights Reserved.  
This document is produced by Cardno Ltd solely for the benefit of and use by the client in accordance with the terms of the retainer. Cardno Ltd does not and shall not assume any responsibility or liability whatsoever to any third party arising out of any use or reliance by third party on the content of this document.



ABN: 95 001 145 035  
Level 9, The Forum, 203 Pacific Highway  
St Leonards NSW Australia 2055  
Phone 1461 21 9494 7700 Fax 1461 21 9439 5170  
Email: Sydney@cardno.com.au Web: www.cardno.com.au



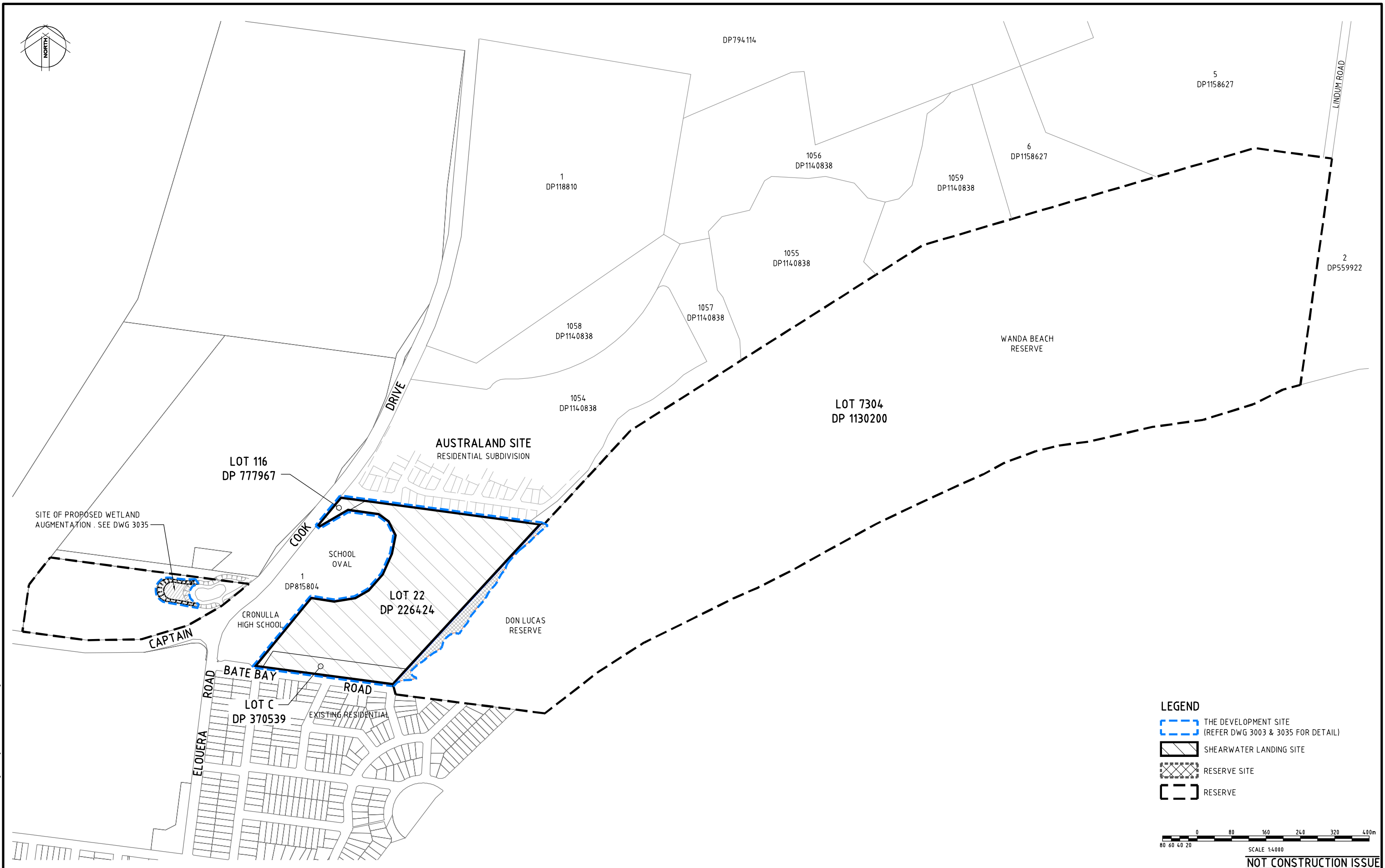
Drawn	DH	Date	8/02/2012
Checked	GN	Date	8/02/2012
Designed	GN	Date	8/02/2012
Verified		Date	
Approved		Date	

Client **BREEN PROPERTY PTY LTD**  
SHEARWATER LANDING  
PROPOSED SUBDIVISION  
BATE BAY ROAD, GREENHILLS BEACH  
COVER SHEET, LOCALITY SKETCH  
AND DRAWING SCHEDULE

NOT FOR CONSTRUCTION				
Date	8/02/2012	Datum	AHD	Scale
			NTS	Size
				A1
Drawing Number	600201-3001			Revision
				5

DATE PLOTTED: 21 June 2012 12:20 PM BY: DAVID HANNA (SYDNEY)

XREF: X-GRP-A1-SHT: X-SYD-A1-Logo: X\_Lot Layout: X-Cadastral: Adjacent  
CAD FILE: \\Urban\6000 - 6099\600201 - Kurnell Peninsula\3 Drafting\Drawings\DA3\600201-300251.dwg



Rev	Date	Description	Drawn	Appr
5	21/06/2012	WETLAND BASIN LOT INCLUDED	DH	GN
4	25/05/2012	FOR APPROVAL	DH	GN
3	24/05/2012	FOR APPROVAL	DPS	GN
2	12/04/2012	PRE DA ISSUE	DH	GN
1	28/02/2012	CLIENT REVIEW	DH	DNA



© Cardno Ltd 2011  
All Rights Reserved.  
This document is produced by Cardno Ltd solely for the benefit of and use by the client in accordance with the terms of the retainer. Cardno Ltd does not and shall not assume any responsibility or liability whatsoever to any third party arising out of any use or reliance by third party on the content of this document.



ABN: 95 001 145 035  
Level 9, The Forum, 203 Pacific Highway  
St Leonards NSW Australia 2055  
Phone (61) 21 9494 7700 Fax (61) 21 9439 5110  
Email: Sydney@cardno.com.au Web: www.cardno.com.au



Drawn	DH	Date	8/02/2012
Checked	GN	Date	8/02/2012
Designed	GN	Date	8/02/2012
Verified		Date	
Approved		Date	

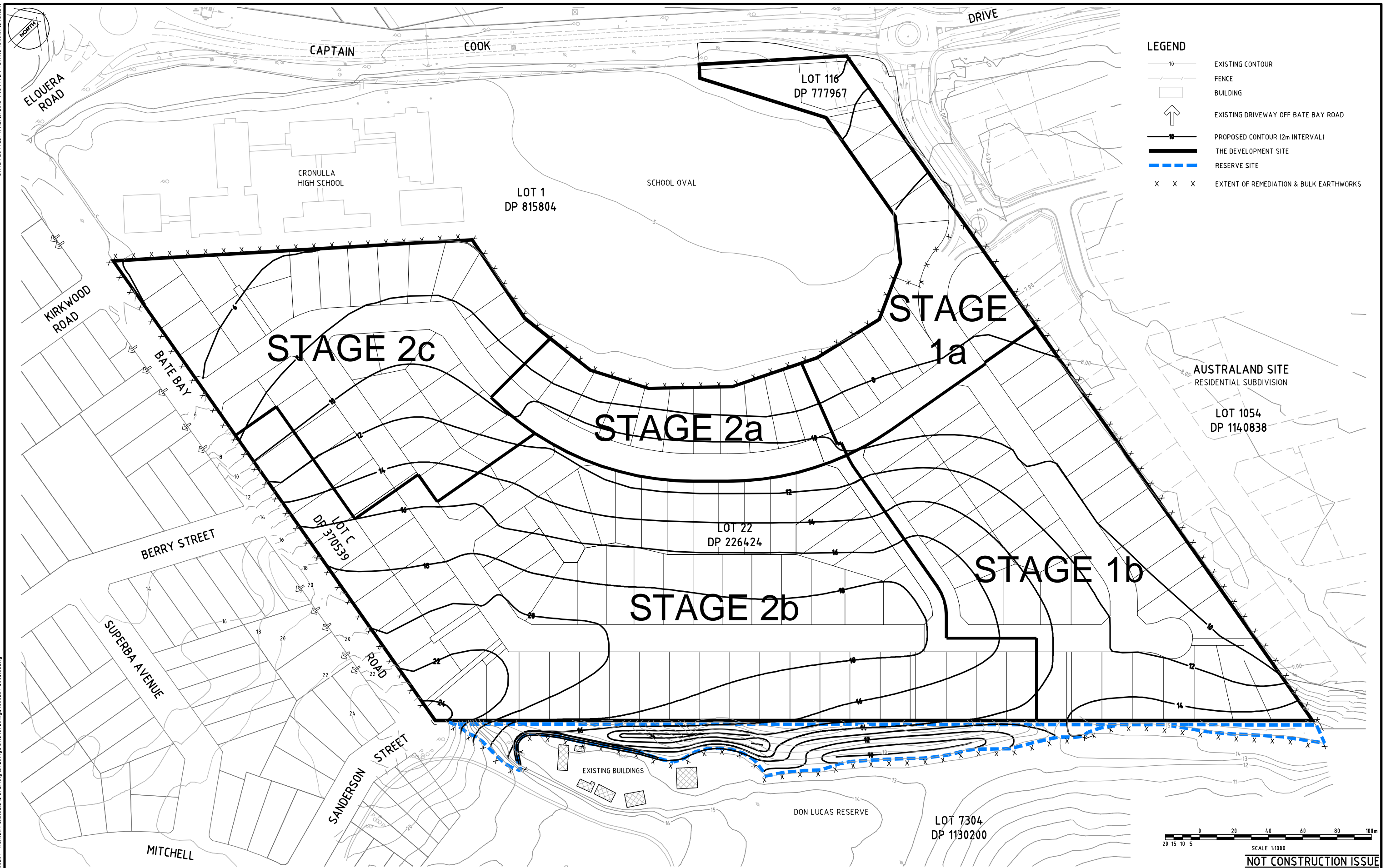
Client: <b>BREEN PROPERTY PTY LTD</b>			
SHEARWATER LANDING PROPOSED SUBDIVISION BATE BAY ROAD, GREENHILLS BEACH			
EXTENT OF DEVELOPMENT			

Status: <b>NOT FOR CONSTRUCTION</b>			
Date	8/02/2012	Datum	AHD
Scale	1:1000	Size	A1
Drawing Number	600201-3002		Revision
			5

0 10 20 30 40 50 60 70 80 90 100 110 120 130 140 150mm ON A1 ORIGINAL



DATE PLOTTED: 11 March 2013 4:45 PM BY: DAVID HANNA (SYDNEY)  
XREF's: X-GRP-A1-SHT; X-SYD-A1-Logo; BATE BAY\_RD\_PROPOSAL-FINAL; X\_Lot Layout; X-Cadastral Adjoining; X-Survey/CaptainCookDrive; X-Design/AustralandRoundabout; X-Contours GIS; X-Contours Design; X\_Existing\_Contours Trimmed  
CAD FILE: \\Urban\6000 - 6099\600201 - Kurnell Peninsula\3 Drafting\Drawings\DA3\Drawings\600201-3003181.dwg



8	11/03/2013	FOR APPROVAL	DH	GN
7	8/03/2013	FOR APPROVAL	DH	GN
6	10/12/2012	FOR APPROVAL	IM	GN
5	21/09/2012	FOR APPROVAL	DH	GN
4	25/05/2012	FOR APPROVAL	ASD	GN
3	24/05/2012	FOR APPROVAL	DPS	GN
2	12/04/2012	PRE DA ISSUE	DH	GN
1	28/02/2012	CLIENT REVIEW	DH	DNA
Rev	Date	Description	Drawn	Appr

© Cardno Ltd 2011  
All Rights Reserved.  
This document is produced by Cardno Ltd solely for the benefit of and use by the client in accordance with the terms of the retainer. Cardno Ltd does not and shall not assume any responsibility or liability whatsoever to any third party arising out of any use or reliance by third party on the content of this document.

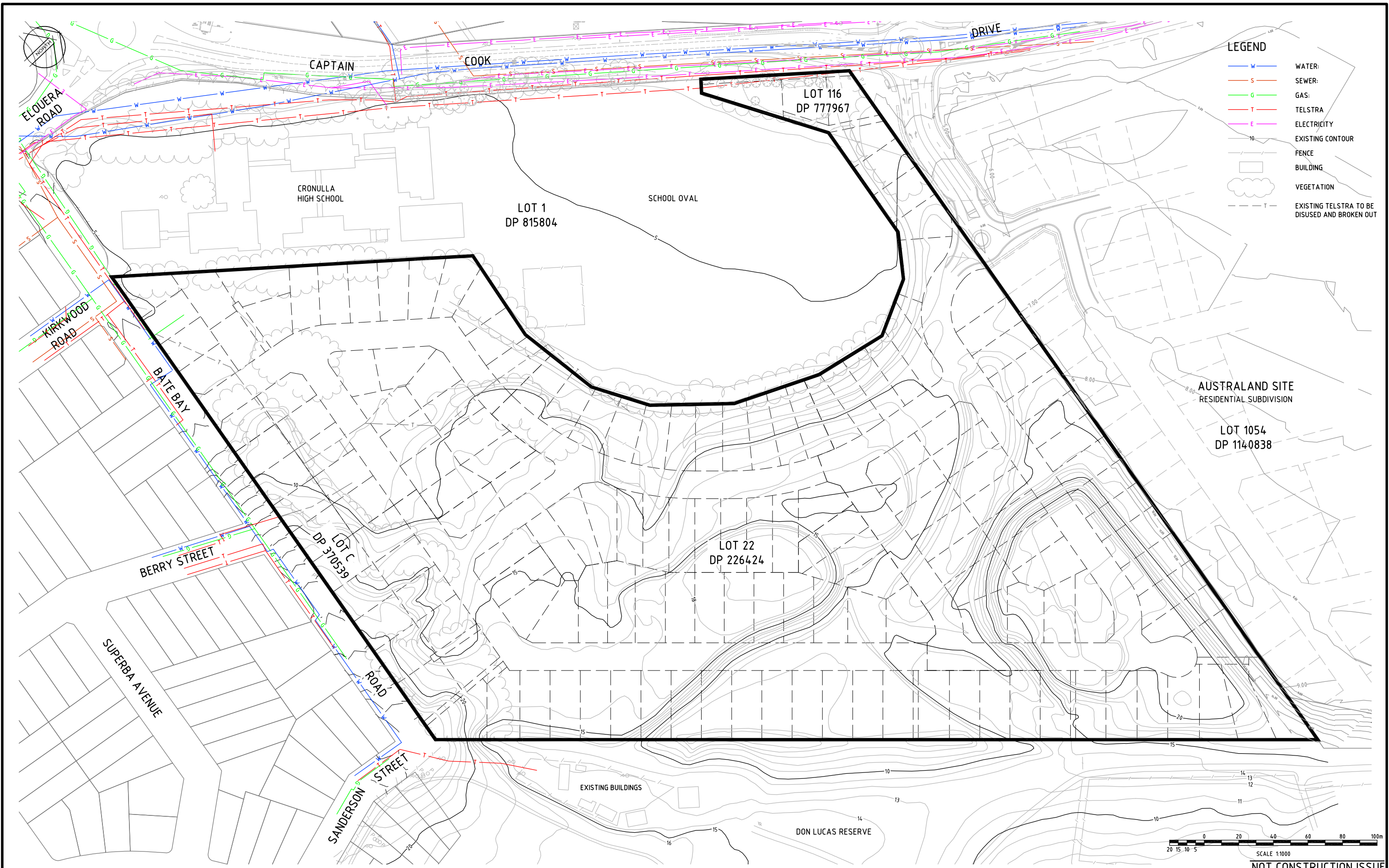
ABN: 95 001 145 035  
Level 9, The Forum, 203 Pacific Highway  
St Leonards NSW Australia 2055  
Phone 1461 21 9494 7700 Fax 1461 21 9439 5170  
Email: Sydney@cardno.com.au Web: www.cardno.com.au

Quality Endorsed Company  
AS 9001 Lic. 9903  
Sydney Australia

Drawn	DH	Date	8/02/2012	Client	BREEN PROPERTY PTY LTD							
Checked	GN	Date	8/02/2012	SHEARWATER LANDING PROPOSED SUBDIVISION BATE BAY ROAD, GREENHILLS BEACH	NOT FOR CONSTRUCTION							
Designed	GN	Date	8/02/2012									
Verified		Date			Date	8/02/2012	Datum	AHD	Scale	1:1000	Size	A1
Approved		Date			Drawing Number	600201-3003						Revision
				DEVELOPMENT PLAN								



DATE PLOTTED: 29 May 2012 15:4 PM BY: DAVID HANNA (SYDNEY)  
XREF's: X-GRP-A1-SHT; X-SYD-A1-Logo; BATE BAY\_RD\_PROP-LANDFORM-FINAL; X\_Layout; X\_Existing\_Contours; X-Contours Design; X-Cadastral Adjoining; X-Service; X-Survey/CaptainCookDrive; X-DesignAustraliaRoundabout; X-Contours Australand 11001  
CAD FILE: \\Urban\6000 - 6099\600201 - Kurnell Peninsula\3 Drafting\Drawings DA3\600201-300513.dwg



Rev	Date	Description	Drawn	Appr.
3	28/05/2012	FOR APPROVAL	DH	GN
2	12/04/2012	PRE DA ISSUE	DH	GN
1	28/02/2012	CLIENT REVIEW	DH	DNA



© Cardno Ltd 2011  
All Rights Reserved.  
This document is produced by Cardno Ltd solely for the benefit of and use by the client in accordance with the terms of the retainer. Cardno Ltd does not and shall not assume any responsibility or liability whatsoever to any third party arising out of any use or reliance by third party on the content of this document.

ABN: 95 001 145 035  
Level 9, The Forum, 203 Pacific Highway  
St Leonards NSW Australia 2065  
Phone (61) 21 9436 7700 Fax (61) 21 9439 5170  
Email: Sydney@cardno.com.au Web: www.cardno.com.au



Drawn	DH	Date	8/02/2012
Checked	GN	Date	8/02/2012
Designed	GN	Date	8/02/2012
Verified		Date	
Approved		Date	

Client **BREEN PROPERTY PTY LTD**

SHEARWATER LANDING  
PROPOSED SUBDIVISION  
BATE BAY ROAD, GREENHILLS BEACH

OVERALL SITE PLAN  
AND EXISTING UTILITIES PLAN

Status	<b>NOT FOR CONSTRUCTION</b>			
Date	8/02/2012	Datum	AHD	Scale
				1:1000
Drawing Number	600201-3005			Revision
				3

0 10 20 30 40 50 60 70 80 90 100 110 120 130 140 150mm ON A1 ORIGINAL



DATE PLOTTED: 11 March 2013 10:58 AM BY: DAVID HANNA (SYDNEY)  
XREF: X-GRP-A1-SHT: X-SYD-A1-Logo; BATE BAY: RD\_PROP-LANDFORM-FINAL: X\_Lof Layout: X\_Existing\_Contours; X-Contours Australand 11021  
CAD FILE: \\Urban\6000 - 6099\600201 - Kurnell Peninsula\3 Drafting\Drawings DA3\Issued\DWG\600201-30616.dwg



NOT CONSTRUCTION ISSUE

Rev	Date	Description	Drawn	Appr
6	21/09/2012	FOR APPROVAL	DH	GN
5	2/08/2012	FOR APPROVAL	DH	GN
4	25/05/2012	FOR APPROVAL	DH	GN
3	24/05/2012	FOR APPROVAL	DPS	GN
2	12/04/2012	PRE DA ISSUE	DH	GN
1	28/02/2012	CLIENT REVIEW	DH	DNA



© Cardno Ltd 2011  
All Rights Reserved.  
This document is produced by Cardno Ltd solely for the benefit of and use by the client in accordance with the terms of the retainer. Cardno Ltd does not and shall not assume any responsibility or liability whatsoever to any third party arising out of any use or reliance by third party on the content of this document.



ABN: 95 001 145 035  
Level 9, The Forum, 203 Pacific Highway  
St Leonards NSW Australia 2055  
Phone 1461 21 9496 7708 Fax 1461 21 9439 5170  
Email: Sydney@cardno.com.au Web: www.cardno.com.au



Drawn	DH	Date	8/02/2012
Checked	GN	Date	8/02/2012
Designed	GN	Date	8/02/2012
Verified		Date	
Approved		Date	

Client	BREEN PROPERTY PTY LTD
	SHEARWATER LANDING PROPOSED SUBDIVISION BATE BAY ROAD, GREENHILLS BEACH
	MASTERPLAN

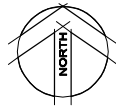
Status	NOT FOR CONSTRUCTION
Date	8/02/2012
Datum	AHD
Scale	1:1000
Size	A1
Drawing Number	600201-3006
Revision	6

0 10 20 30 40 50 60 70 80 90 100 110 120 130 140 150mm ON A1 ORIGINAL



DATE PLOTTED: 11 March 2013 4:45 PM BY: DAVID HANNA (SYDNEY)

XREF: X-GRP-A1-SHT: X-SYD-A1-Logo: X\_Layout: X-Cadastral Adjoining: X-Contours Design  
CAD FILE: \\Urban\6000 - 6099\600201 - Kurnell Peninsula\3 Drafting\Drawings\DA3\Drawings\600201-3007\4.dwg



**LEGEND**

- PRECINCT BOUNDARY
- XXXXX EXTENT OF REMEDIATION & BULK EARTHWORKS
- PROPOSED STORMWATER
- PROPOSED SEWER LEAD-IN
- PROPOSED FINISHED SURFACE CONTOUR

40 30 20 10 0 40 80 120 160 200m  
SCALE 1:2000

NOT CONSTRUCTION ISSUE

Rev	Date	Description	Drawn	Appr.
4	11/03/2013	FOR APPROVAL	DH	GN
3	8/03/2013	FOR APPROVAL	DH	GN
2	2/08/2012	FOR APPROVAL	DH	GN
1	21/06/2012	FOR APPROVAL	DH	GN



© Cardno Ltd 2011  
All Rights Reserved.  
This document is produced by Cardno Ltd solely for the benefit of and use by the client in accordance with the terms of the retainer. Cardno Ltd does not and shall not assume any responsibility or liability whatsoever to any third party arising out of any use or reliance by third party on the content of this document.

**Cardno**  
ABN: 95 001 145 035  
Level 9, The Forum, 203 Pacific Highway  
St Leonards NSW Australia 2055  
Phone 1461 21 9496 7708 Fax 1461 21 9439 5176  
Email: Sydney@cardno.com.au Web: www.cardno.com.au



Drawn	DH	Date	13/06/2012
Checked	GN	Date	13/06/2012
Designed	GN	Date	13/06/2012
Verified		Date	
Approved		Date	

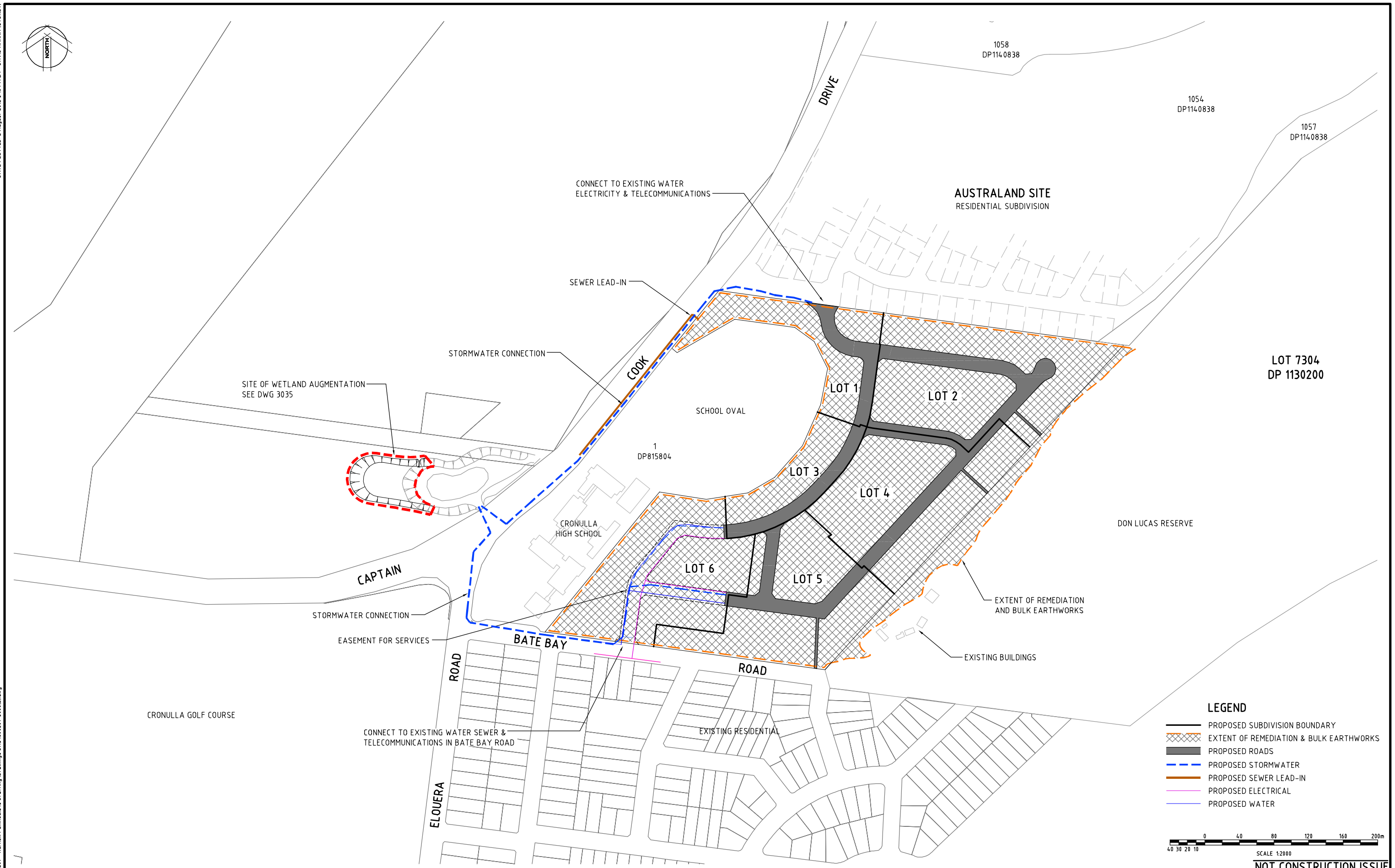
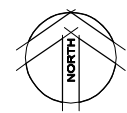
**BREEN PROPERTY PTY LTD**  
SHEARWATER LANDING  
PROPOSED SUBDIVISION  
BATE BAY ROAD, GREENHILLS BEACH  
OVERALL CONCEPT LAYOUT

NOT FOR CONSTRUCTION			
Date	Datum	Scale	Size
13/06/2012	AHD	1:2000	A1
Drawing Number			Revision
600201-3007			4

0 10 20 30 40 50 60 70 80 90 100 110 120 130 140 150mm ON A1 ORIGINAL

DATE PLOTTED: 2 August 2012 3:16 PM BY: DAVID HANNA (SYDNEY)

XREF's: X-GRP-A1-SHT: X-SYD-A1-Logo: X-Layout: X-Cadastral: X-Contours: X-Contours Design  
CAD FILE: \\Urban\6000 - 6099\600201 - Kurnell Peninsula\3 Drafting\Drawings\DA3\600201-3008\21.dwg



**LEGEND**

- PROPOSED SUBDIVISION BOUNDARY
- EXTENT OF REMEDIATION & BULK EARTHWORKS
- PROPOSED ROADS
- PROPOSED STORMWATER
- PROPOSED SEWER LEAD-IN
- PROPOSED ELECTRICAL
- PROPOSED WATER

SCALE 1:2000

NOT CONSTRUCTION ISSUE

Rev	Date	Description	Drawn	Appr
2	2/08/2012	FOR APPROVAL	DH	GN
1	21/06/2012	FOR APPROVAL	DH	GN

© Cardno Ltd 2011  
All Rights Reserved.  
This document is produced by Cardno Ltd solely for the benefit of and use by the client in accordance with the terms of the retainer. Cardno Ltd does not and shall not assume any responsibility or liability whatsoever to any third party arising out of any use or reliance by third party on the content of this document.

ABN 95 001 145 035  
Level 9, The Forum, 203 Pacific Highway  
St Leonards NSW Australia 2055  
Phone 1461 21 9496 7700 Fax 1461 21 9439 5170  
Email: Sydney@cardno.com.au Web: www.cardno.com.au

Drawn	DH	Date	13/06/2012	Client	<b>BREEN PROPERTY PTY LTD</b>			
Checked	GN	Date	13/06/2012		SHEARWATER LANDING PROPOSED SUBDIVISION BATE BAY ROAD, GREENHILLS BEACH			
Designed	GN	Date	13/06/2012		STAGE 1 WORKS			
Verified		Date						
Approved		Date						

Status	<b>NOT FOR CONSTRUCTION</b>						
Date	13/06/2012	Datum	AHD	Scale	1:2000	Size	A1
Drawing Number	600201-3008				Revision	2	



XREF: s: X-GRP-A1-SHT: X-SYD-A1-Logo: BATE BAY\_RD\_PROP-LANDFORM-FINAL\_X\_Lof Layout: X-Cadastral: Adjoining: X-Survey(CaptainCookDrive: X-Design(AustralandRoundabout  
CAD FILE: \\Urban\6000 - 6099\600201 - Kurnell Peninsula\3 Drafting\Drawings\DA3\Drawings\600201-300914.dwg  
DATE PLOTTED: 18 December 2012 8:27 AM BY: IAN C. MCKENZIE (SYDNEY)



LOT ANALYSIS STAGE 1	
LOT AREA	NUMBER OF LOTS
<599m <sup>2</sup>	6
600m <sup>2</sup> -649m <sup>2</sup>	56
650m <sup>2</sup> -699m <sup>2</sup>	8
>700m <sup>2</sup>	57
TOTAL	127

Rev	Date	Description	Drawn	Appr
4	18/12/2012	LOT ADJUSTED	IM	GN
3	28/05/2012	FOR APPROVAL	DH	GN
2	12/04/2012	PRE DA ISSUE	DH	GN
1	28/02/2012	CLIENT REVIEW	DH	DNA



© Cardno Ltd 2011  
All Rights Reserved.  
This document is produced by Cardno Ltd solely for the benefit of and use by the client in accordance with the terms of the retainer. Cardno Ltd does not and shall not assume any responsibility or liability whatsoever to any third party arising out of any use or reliance by third party on the content of this document.



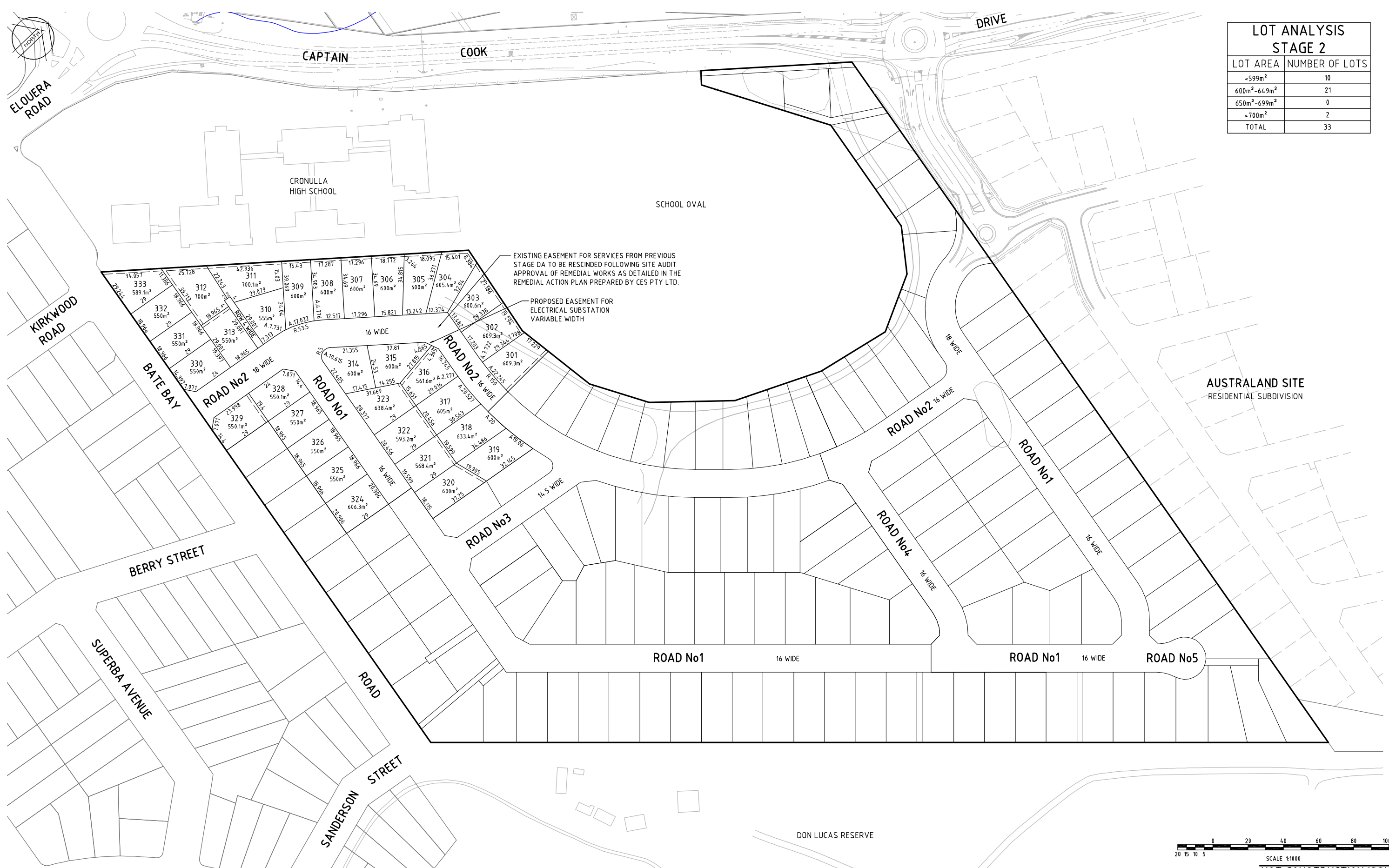
Drawn	DH	Date	8/02/2012
Checked	GN	Date	8/02/2012
Designed	GN	Date	8/02/2012
Verified		Date	
Approved		Date	

Client **BREEN PROPERTY PTY LTD**  
SHEARWATER LANDING  
PROPOSED SUBDIVISION  
BATE BAY ROAD, GREENHILLS BEACH  
SUBDIVISION PLAN - STAGE 1

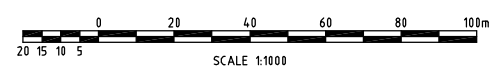
NOT FOR CONSTRUCTION			
Date	8/02/2012	Datum	AHD
Scale	1:1000	Size	A1
Drawing Number	600201-3009		Revision
			4



DATE PLOTTED: 29 May 2012 1:56 PM BY: DAVID HANNA (SYDNEY)  
XREF's: X-GRP-A1-SHT; X-SYD-A1-Logo; BATE BAY; RD\_PROP\_LANDFORM-FINAL; X\_Leif Layout; X\_Existing\_Contours; X-Contours Australand  
CAD FILE: \\Urban\6000 - 6099\60201 - Kurnell Peninsula\3 Drafting\Drawings\DA3\60201-30103.dwg



LOT ANALYSIS STAGE 2	
LOT AREA	NUMBER OF LOTS
<599m <sup>2</sup>	10
600m <sup>2</sup> -649m <sup>2</sup>	21
650m <sup>2</sup> -699m <sup>2</sup>	0
>700m <sup>2</sup>	2
TOTAL	33



NOT CONSTRUCTION ISSUE

Rev	Date	Description	Drawn	Appr.
3	28/05/2012	FOR APPROVAL	DH	GN
2	12/04/2012	PRE DA ISSUE	DH	GN
1	28/02/2012	CLIENT REVIEW	DH	DNA



© Cardno Ltd 2011  
All Rights Reserved.  
This document is produced by Cardno Ltd solely for the benefit of and use by the client in accordance with the terms of the retainer. Cardno Ltd does not and shall not assume any responsibility or liability whatsoever to any third party arising out of any use or reliance by third party on the content of this document.

ABN: 95 001 145 035  
Level 9, The Forum, 203 Pacific Highway  
St Leonards NSW Australia 2065  
Phone (415) 24 9436 7700 Fax (415) 24 9439 5176  
Email: Sydney@cardno.com.au Web: www.cardno.com.au



Drawn	DH	Date	8/02/2012
Checked	GN	Date	8/02/2012
Designed	GN	Date	8/02/2012
Verified		Date	
Approved		Date	

Client**BREEN PROPERTY PTY LTD**

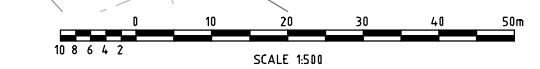
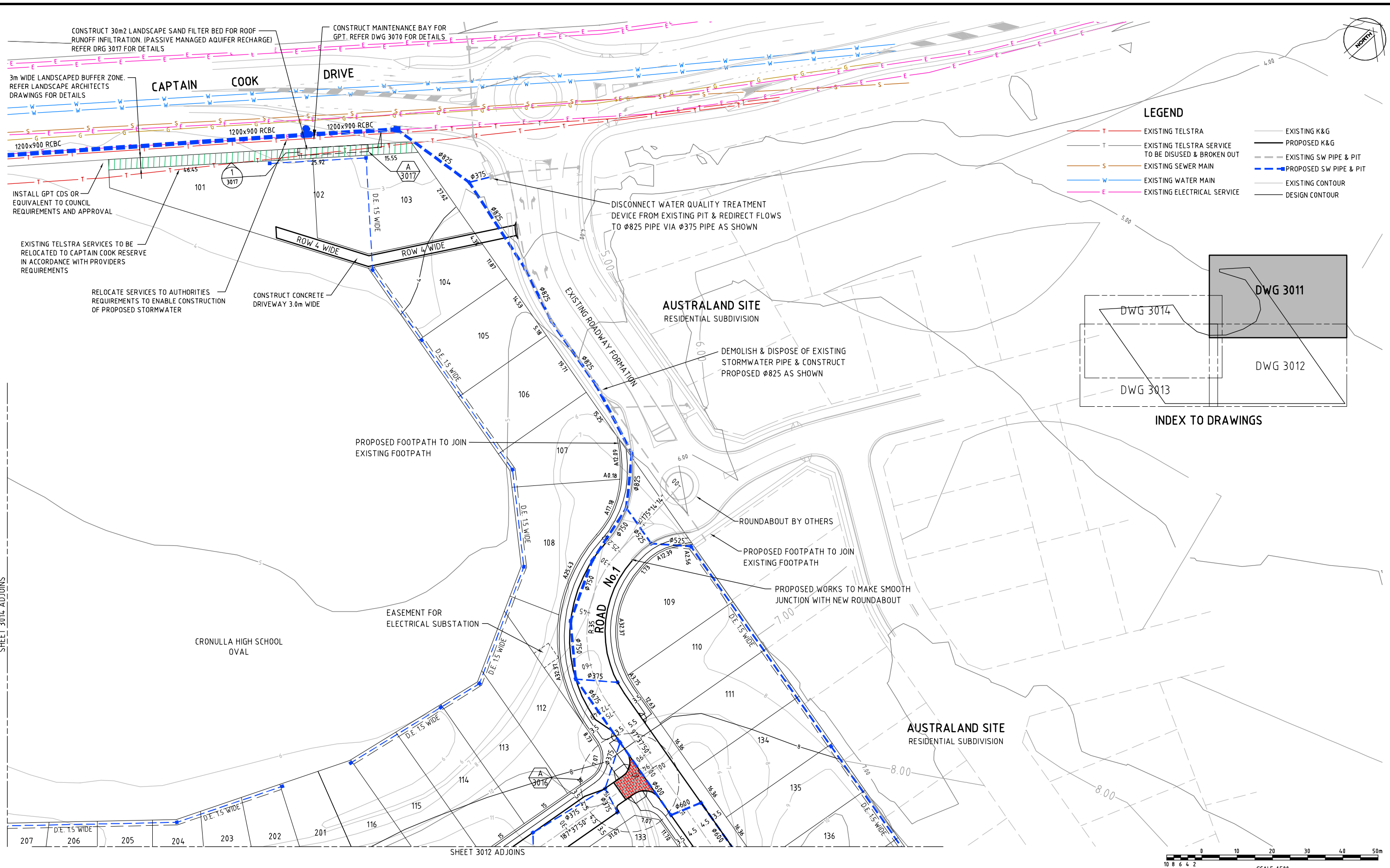
SHEARWATER LANDING  
PROPOSED SUBDIVISION  
BATE BAY ROAD, GREENHILLS BEACH

SUBDIVISION PLAN - STAGE 2

NOT FOR CONSTRUCTION			
Date	Datum	Scale	Size
8/02/2012	AHD	1:1000	A1
Drawing Number			Revision
600201-3010			3



DATE PLOTTED: 8 March 2013 3:42 PM BY: DAVID HANNA (SYDNEY)  
SHEET 3014 AD JOINS  
XREF's: X-GRP-A1-SHT, X-SYD-A1-Logo, X-Cadastral, X-Contours, X-Contours Design, X-Contours Australand 11021  
CAD FILE: \\Urban\6000 - 6099\600201 - Kurnell Peninsula\3 Drafting\Drawings\DA3\Drawings\600201-30110.dwg



NOT CONSTRUCTION ISSUE

Rev	Date	Description	Drawn	Appr
6	8/03/2013	FOR APPROVAL	DH	GN
5	21/09/2012	FOR APPROVAL	DH	GN
4	2/08/2012	FOR APPROVAL	DH	GN
3	28/05/2012	FOR APPROVAL	DH	GN
2	12/04/2012	PRE DA ISSUE	DH	GN
1	28/02/2012	CLIENT REVIEW	DH	DNA



© Cardno Ltd 2011  
All Rights Reserved.  
This document is produced by Cardno Ltd solely for the benefit of and use by the client in accordance with the terms of the retainer. Cardno Ltd does not and shall not assume any responsibility or liability whatsoever to any third party arising out of any use or reliance by third party on the content of this document.



ABN: 95 001 45 035  
Level 9, The Forum, 203 Pacific Highway  
St Leonards NSW Australia 2055  
Phone: +61 21 9496 7700 Fax: +61 21 9439 5170  
Email: Sydney@cardno.com.au Web: www.cardno.com.au



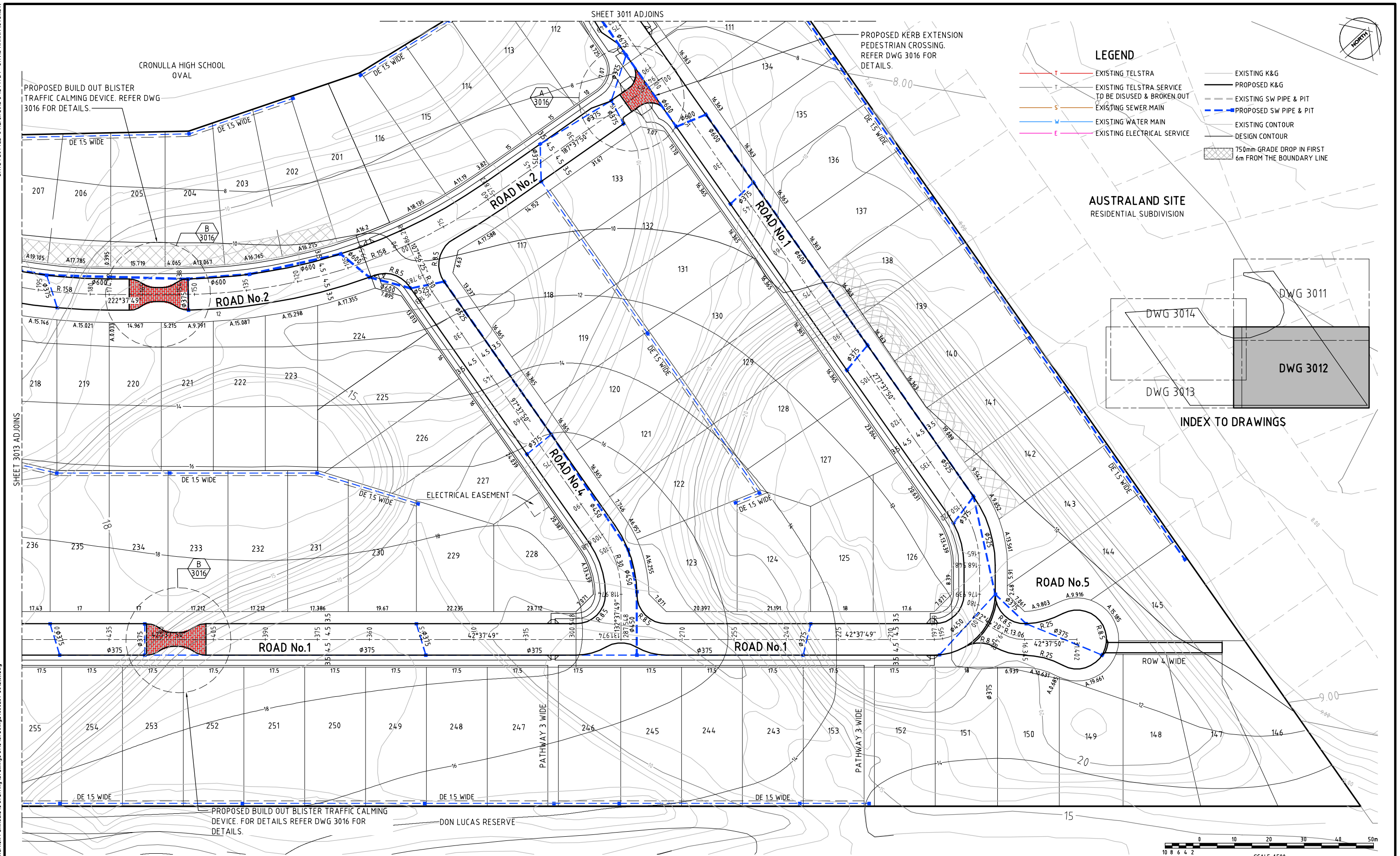
Quality  
Endorsed  
Company

Drawn	DH	Date	8/02/2012	Client	BREEN PROPERTY PTY LTD			
Checked	GN	Date	8/02/2012		SHEARWATER LANDING PROPOSED SUBDIVISION BATE BAY ROAD, GREENHILLS BEACH			
Designed	GN	Date	8/02/2012					
Verified		Date			STAGE 1 & 2 GENERAL ARRANGEMENT PLAN SHEET 1 OF 3			
Approved		Date						
					Status	NOT FOR CONSTRUCTION		
					Date	8/02/2012	Datum	AHD
					Scale	1:500	Size	A1
					Drawing Number	600201-3011		Revision
								6



DATE PLOTTED: 8 March 2013 3:42 PM BY: DAVID HANNA (SYDNEY)

XREF: X-GRP-A1-SHT: X-SYD-A1-Logo: X-Of Layout: X-Cadastral Adjoining: X-Existing Contours: X-Contours Australand 11021  
CAD FILE: \\Urban\6000 - 6099\600201 - Kurnell Peninsula\3 Drafting\Drawings\DA3\Drawings\600201-3012\600201-3012\600201-3012.dwg



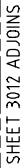
Rev	Date	Description	Drawn	Appr
6	8/03/2013	FOR APPROVAL	DH	GN
5	21/09/2012	FOR APPROVAL	DH	GN
4	2/08/2012	FOR APPROVAL	DH	GN
3	28/05/2012	FOR APPROVAL	DH	GN
2	12/04/2012	PRE DA ISSUE	DH	GN
1	28/02/2012	CLIENT REVIEW	DH	DNA

© Cardno Ltd 2011  
All Rights Reserved.  
This document is produced by Cardno Ltd solely for the benefit of and use by the client in accordance with the terms of the retainer. Cardno Ltd does not and shall not assume any responsibility or liability whatsoever to any third party arising out of any use or reliance by third party on the content of this document.

ABN 95 001145 035  
Level 9, The Forum, 203 Pacific Highway  
St Leonards NSW Australia 2055  
Phone 1461 21 9496 7708 Fax 1461 21 9439 5170  
Email: Sydney@cardno.com.au Web: www.cardno.com.au

Drawn	DH	Date	8/02/2012	Client	BREEN PROPERTY PTY LTD			
Checked	GN	Date	8/02/2012		SHEARWATER LANDING PROPOSED SUBDIVISION BATE BAY ROAD, GREENHILLS BEACH			
Designed	GN	Date	8/02/2012					
Verified		Date						
Approved		Date			STAGE 1 & 2 GENERAL ARRANGEMENT PLAN SHEET 2 OF 3			
					Status	NOT FOR CONSTRUCTION		
					Date	8/02/2012	Datum	AHD
					Scale	1:500	Size	A1
					Drawing Number	600201-3012		Revision
						6		



[illegible]

© Cardno Ltd 2011  
All Rights Reserved.

This document is produced by Cardno Ltd solely for the benefit of and use by the client in accordance with the terms of the retainer. Cardno Ltd does not and shall not assume any responsibility or liability whatsoever to any third party arising out of any use or reliance by third party on the content of this document.



Drawn	Date
DH	8/02/2012
Checked	Date
GN	8/02/2012
Designed	Date
GN	8/02/2012
Verified	Date
Approved	Date

Client	<b>BREEN PROPERTY PTY LTD</b>		Sheet	
	SHEARWATER LANDING PROPOSED SUBDIVISION BATE BAY ROAD, GREENHILLS BEACH		Date	
	STAGE 1 & 2 GENERAL ARRANGEMENT PLAN SHEET 3 OF 3		Drawn	

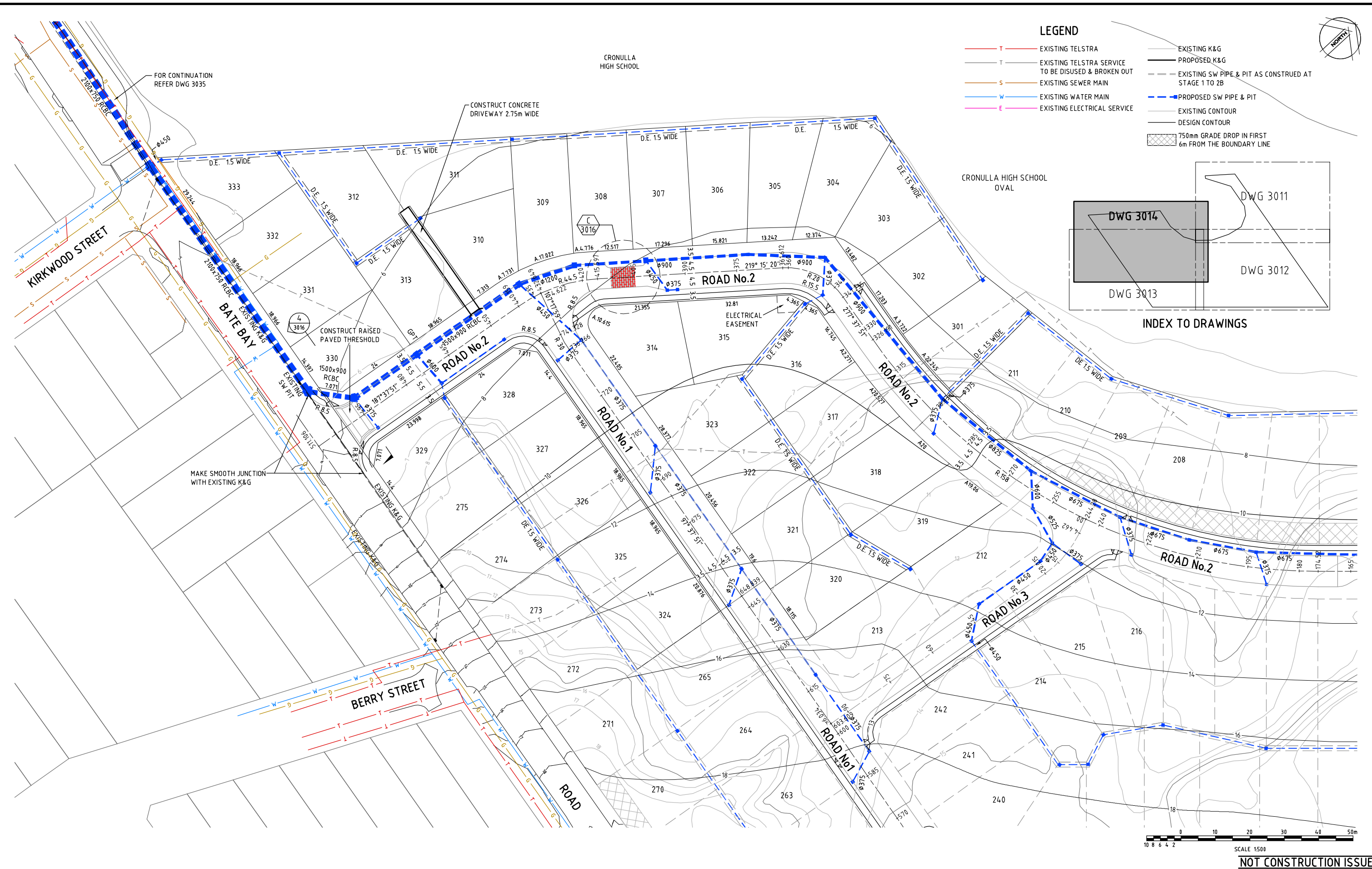
Status			
<b>NOT FOR CONSTRUCTION</b>			
Date	Datum	Scale	Size
8/02/2012	AHD	1:500	A1
Drawing Number			Revision
600201-3013			7



DATE PLOTTED: 8 March 2013 3:42 PM BY: DAVID HANNA (SYDNEY)

XREF: X-GRP-A1-SHT: X-SYD-A1-Logo: X\_Layout: X-Cadastral Adjoining: X\_Existing Contours: X-Contours Design: X-Service

CAD FILE: \\Urban\6000 - 6099\600201 - Kurnell Peninsula\3 Drafting\Drawings\DA3\Drawings\600201-3014.dwg



Rev	Date	Description	Drawn	Appr
6	8/03/2013	FOR APPROVAL	DH	GN
5	21/09/2012	FOR APPROVAL	DH	GN
4	2/08/2012	FOR APPROVAL	DH	GN
3	28/05/2012	FOR APPROVAL	DH	GN
2	12/04/2012	PRE DA ISSUE	DH	GN
1	28/02/2012	CLIENT REVIEW	DH	DNA

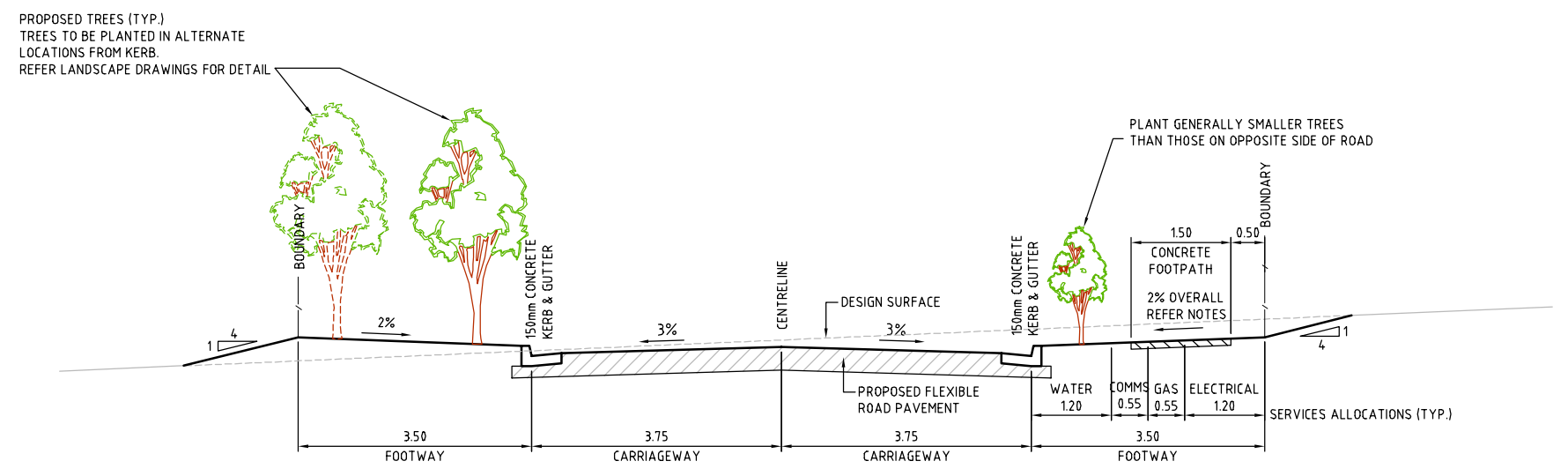
© Cardno Ltd 2011  
All Rights Reserved.  
This document is produced by Cardno Ltd solely for the benefit of and use by the client in accordance with the terms of the retainer. Cardno Ltd does not and shall not assume any responsibility or liability whatsoever to any third party arising out of any use or reliance by third party on the content of this document.

ABN 95 001 145 035  
Level 9, The Forum, 203 Pacific Highway  
St Leonards NSW Australia 2055  
Phone 1461 21 9496 7708 Fax 1461 21 9439 5170  
Email: Sydney@cardno.com.au Web: www.cardno.com.au

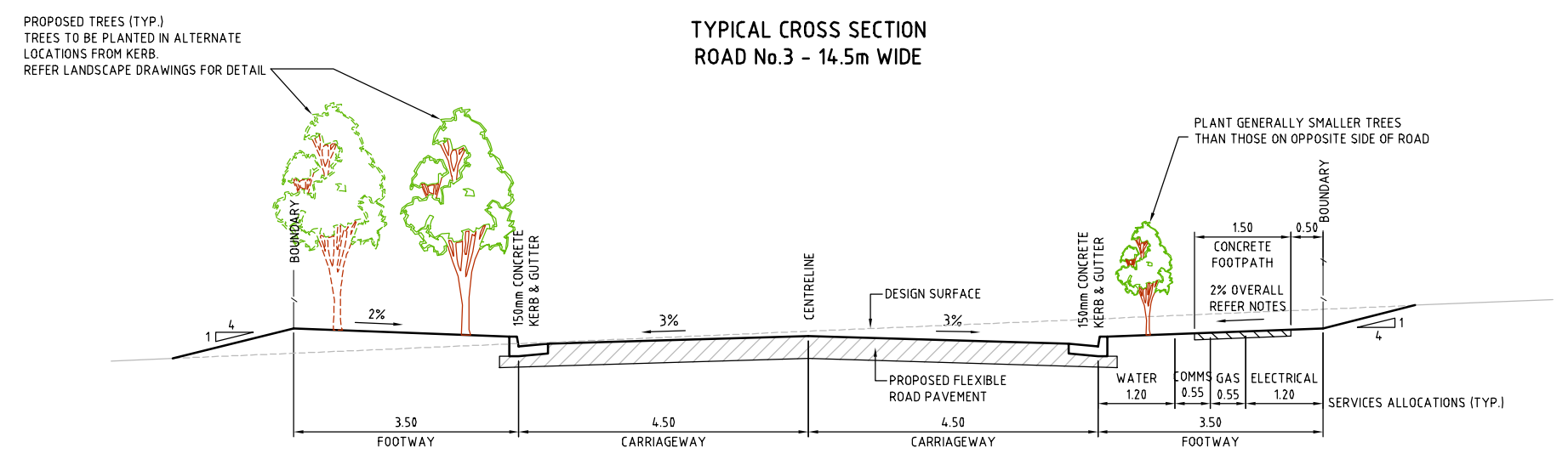
AS 9001:2008  
Standard Australia

Drawn	Date	Client	Status
DH	8/02/2012	BREEN PROPERTY PTY LTD	NOT FOR CONSTRUCTION
Checked	Date	Project	Drawing Number
GN	8/02/2012	SHEARWATER LANDING PROPOSED SUBDIVISION BATE BAY ROAD, GREENHILLS BEACH	600201-3014
Designed	Date	Stage	Revision
GN	8/02/2012	STAGE 2C GENERAL ARRANGEMENT PLAN SHEET 1 OF 1	6
Verified	Date		
Approved	Date		

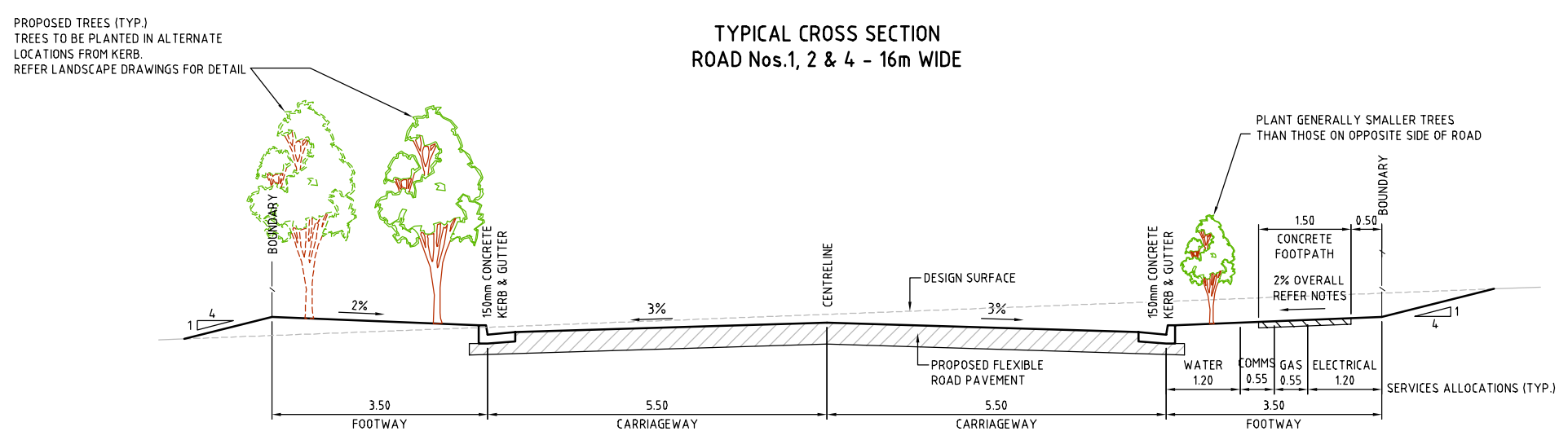




TYPICAL CROSS SECTION  
ROAD No.3 - 14.5m WIDE

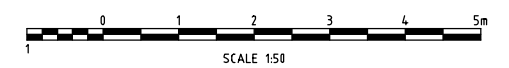


TYPICAL CROSS SECTION  
ROAD Nos.1, 2 & 4 - 16m WIDE



TYPICAL CROSS SECTION  
ROAD Nos.1 & 2 - 18m WIDE

- NOTES
1. THE DESIGN SURFACE NOTED HEREON RELATES TO A LEVEL AT THE TOP OF THE CAPPING LAYER WHICH IS 2m ABOVE THE BULK EARTHWORKS LEVEL. REFER DWG 3065 & 3066 FOR SECTIONS
  2. CONSTRUCT VERGE (BACK OF KERB TO BOUNDARY) AT 2% FALL OVERALL
  3. CONSTRUCT FOOTPATH WITH 2% CROSS FALL UNLESS NOTED OTHERWISE



NOT CONSTRUCTION ISSUE

Rev	Date	Description	Drawn	Appr
4	2/08/2012	FOR APPROVAL	DH	GN
3	28/05/2012	FOR APPROVAL	DH	GN
2	12/04/2012	PRE DA ISSUE	DH	GN
1	28/02/2012	CLIENT REVIEW	DH	DNA



© Cardno Ltd 2011  
All Rights Reserved.  
This document is produced by Cardno Ltd solely for the benefit of and use by the client in accordance with the terms of the retainer. Cardno Ltd does not and shall not assume any responsibility or liability whatsoever to any third party arising out of any use or reliance by third party on the content of this document.



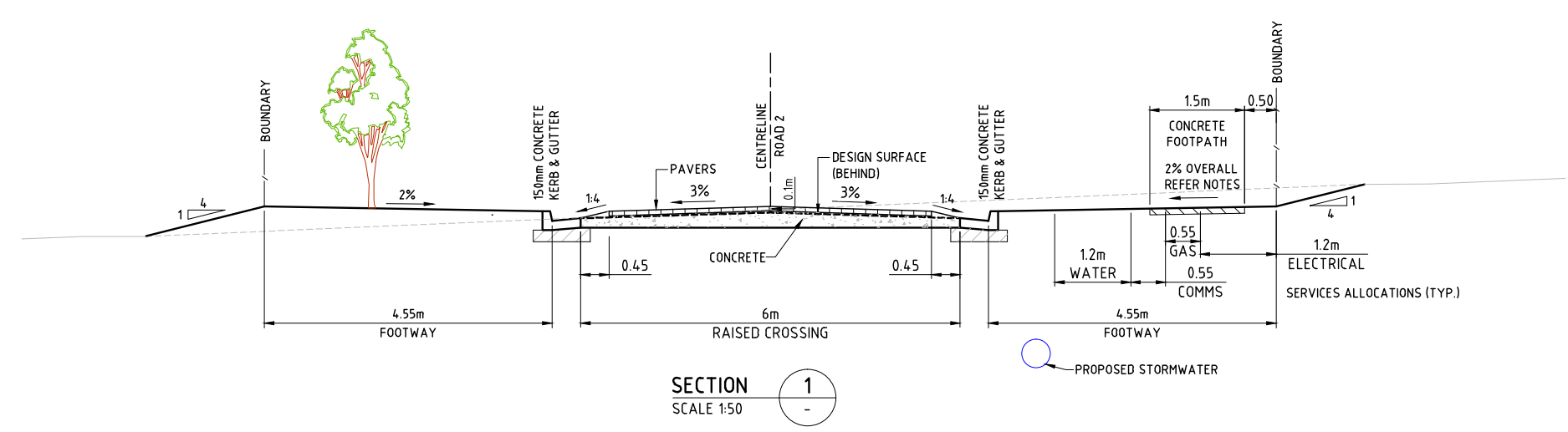
Drawn	DH	Date	8/02/2012
Checked	GN	Date	8/02/2012
Designed	GN	Date	8/02/2012
Verified		Date	
Approved		Date	

Client **BREEN PROPERTY PTY LTD**  
SHEARWATER LANDING  
PROPOSED SUBDIVISION  
BATE BAY ROAD, GREENHILLS BEACH  
TYPICAL CROSS SECTIONS - SHEET 1 of 2

NOT FOR CONSTRUCTION			
Date	Datum	Scale	Size
8/02/2012	AHD	1:50	A1
Drawing Number			Revision
600201-3015			4

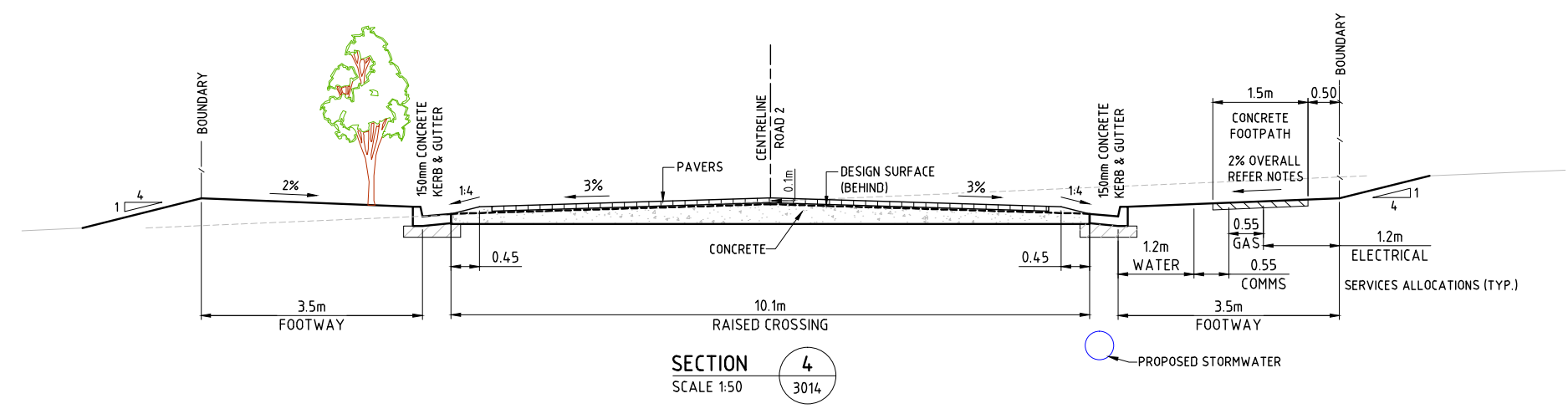


DATE PLOTTED: 21 September 2012 12:28 PM BY: DAVID HANNA (SYDNEY)  
XREF: X-GRP-A1-SHT: X-SYD-A1-Logo  
CAD FILE: \\Urban\6000 - 6099\600201 - Kurnell Peninsula\3 Drafting\Drawings\DA3\600201-301615.dwg

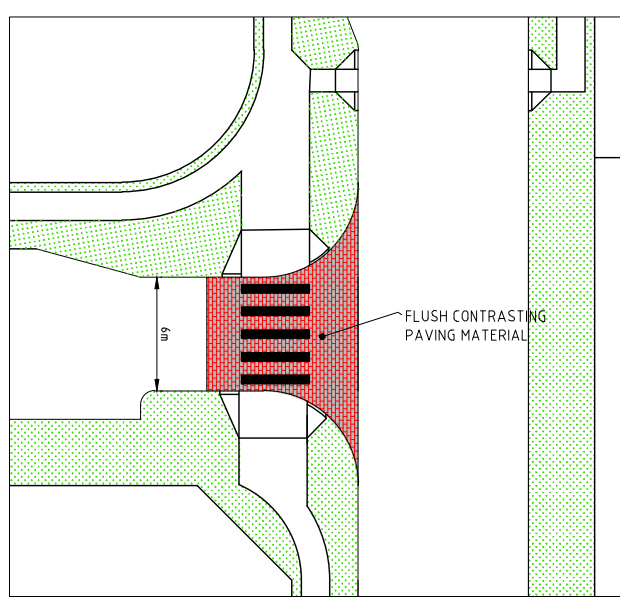


SECTION 1  
SCALE 1:50

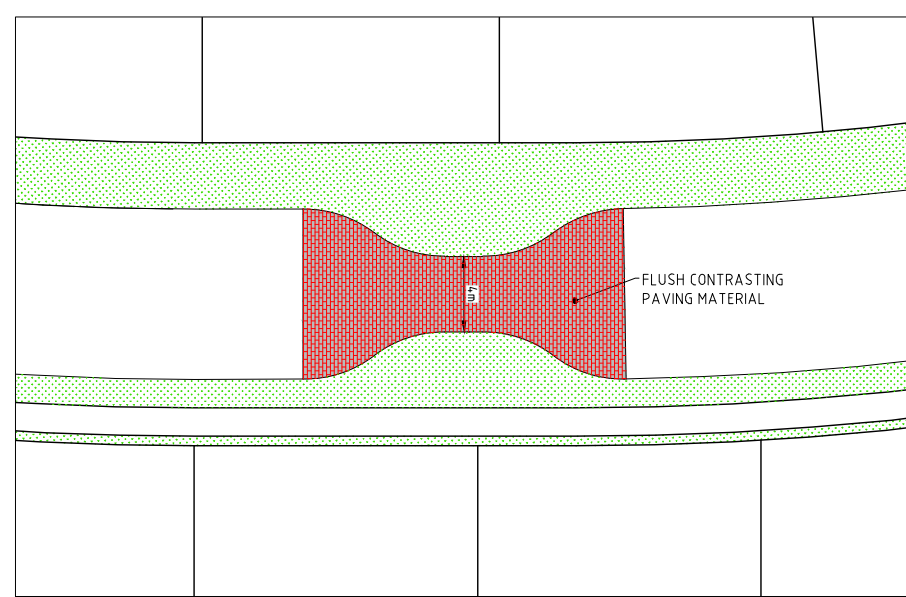
- NOTES
1. CONSTRUCT VERGE (BACK OF KERB TO BOUNDARY) AT 2% FALL OVERALL
  2. CONSTRUCT FOOTPATH WITH 2% CROSS FALL UNLESS NOTED OTHERWISE



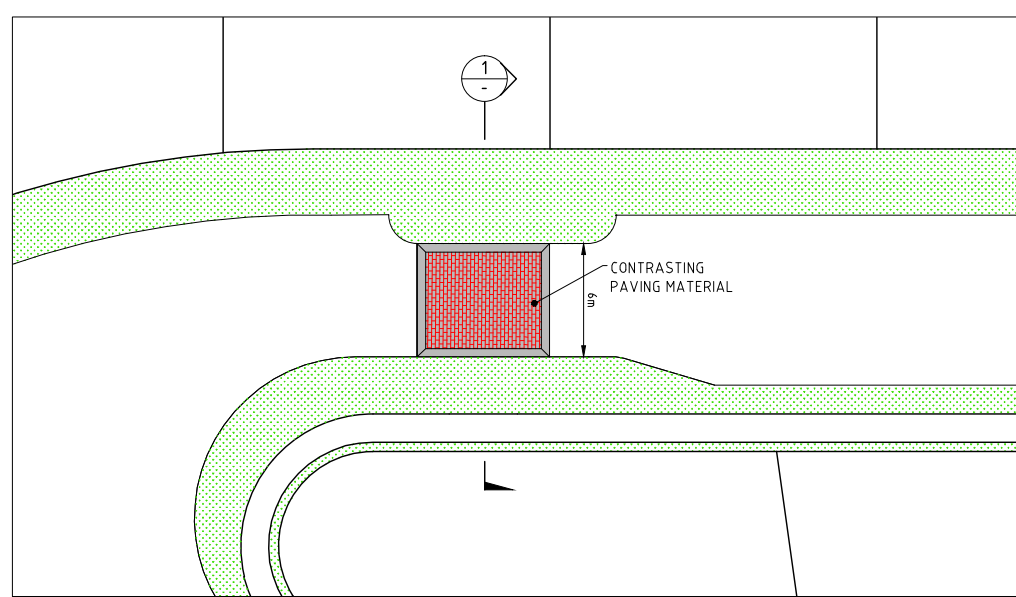
SECTION 4  
SCALE 1:50



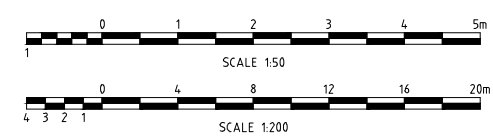
DETAIL A  
SCALE 1:200



DETAIL B  
SCALE 1:200



DETAIL C  
SCALE 1:200



NOT CONSTRUCTION ISSUE

Rev	Date	Description	Drawn	Appr
5	21/09/2012	FOR APPROVAL	DH	GN
4	2/08/2012	FOR APPROVAL	DH	GN
3	28/05/2012	FOR APPROVAL	DH	GN
2	12/04/2012	PRE DA ISSUE	DH	GN
1	28/02/2012	CLIENT REVIEW	DH	DNA



© Cardno Ltd 2011  
All Rights Reserved.  
This document is produced by Cardno Ltd solely for the benefit of and use by the client in accordance with the terms of the retainer. Cardno Ltd does not and shall not assume any responsibility or liability whatsoever to any third party arising out of any use or reliance by third party on the content of this document.



ABN: 95 001 145 035  
Level 9, The Forum, 203 Pacific Highway  
St Leonards NSW Australia 2065  
Phone (442 2) 94 96 7700 Fax (442 2) 94 96 5176  
Email: Sydney@cardno.com.au Web: www.cardno.com.au



Quality Endorsed Company  
AS 9001:2008  
Standard Australia

Drawn	DH	Date	8/02/2012
Checked	GN	Date	8/02/2012
Designed	GN	Date	8/02/2012
Verified		Date	
Approved		Date	

Client: **BREEN PROPERTY PTY LTD**

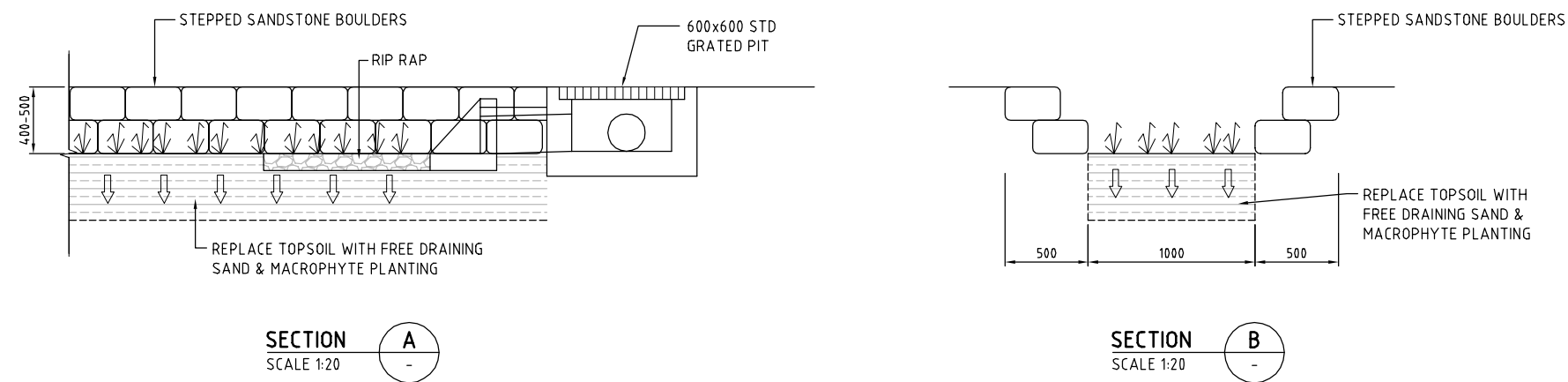
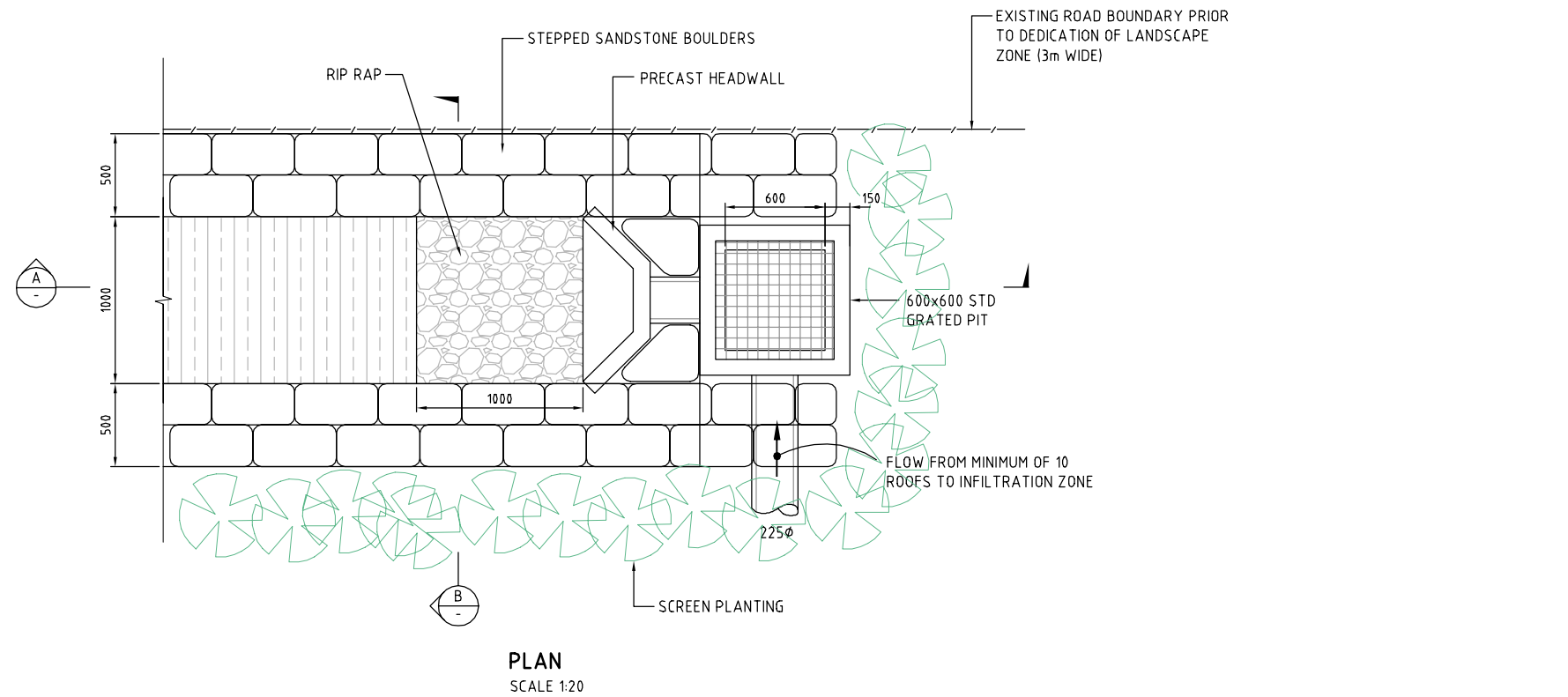
SHEARWATER LANDING  
PROPOSED SUBDIVISION  
BATE BAY ROAD, GREENHILLS BEACH

Status	<b>NOT FOR CONSTRUCTION</b>							
Date	8/02/2012	Datum	AHD	Scale	1:50	Size	A1	
Drawing Number	600201-3016						Revision	5

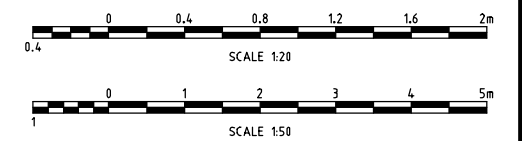
TYPICAL CROSS SECTIONS - SHEET 2 of 2



DATE PLOTTED: 2 August 2012 4:55 PM BY: DAVID HANNA (SYDNEY)  
XREF: s-X-GRP-A1-SHT-X-SYD-A1-Logo.RIP.RAP.OUTLET.DETAIL  
CAD FILE: \\Urban\6000 - 6099\600201 - Kurnell Peninsula\3 Drafting\Drawings\DA3\600201-3017\4.dwg



DETAIL - PASSIVE AQUIFER RECHARGE



NOT CONSTRUCTION ISSUE

Rev	Date	Description	Drawn	Appr
4	2/08/2012	FOR APPROVAL	DH	GN
3	28/05/2012	FOR APPROVAL	DH	GN
2	12/04/2012	PRE DA ISSUE	DH	GN
1	28/02/2012	CLIENT REVIEW	DH	DNA



© Cardno Ltd 2011  
All Rights Reserved.  
This document is produced by Cardno Ltd solely for the benefit of and use by the client in accordance with the terms of the retainer. Cardno Ltd does not and shall not assume any responsibility or liability whatsoever to any third party arising out of any use or reliance by third party on the content of this document.



Drawn	DH	Date	8/02/2012
Checked	GN	Date	8/02/2012
Designed	GN	Date	8/02/2012
Verified		Date	
Approved		Date	

Client	BREEN PROPERTY PTY LTD		
	SHEARWATER LANDING PROPOSED SUBDIVISION BATE BAY ROAD, GREENHILLS BEACH		
Details Sheet	DETAILS SHEET		

Status	NOT FOR CONSTRUCTION		
Date	8/02/2012	Datum	AHD
Scale	1:50	Size	A1
Drawing Number	600201-3017		
Revision	4		